

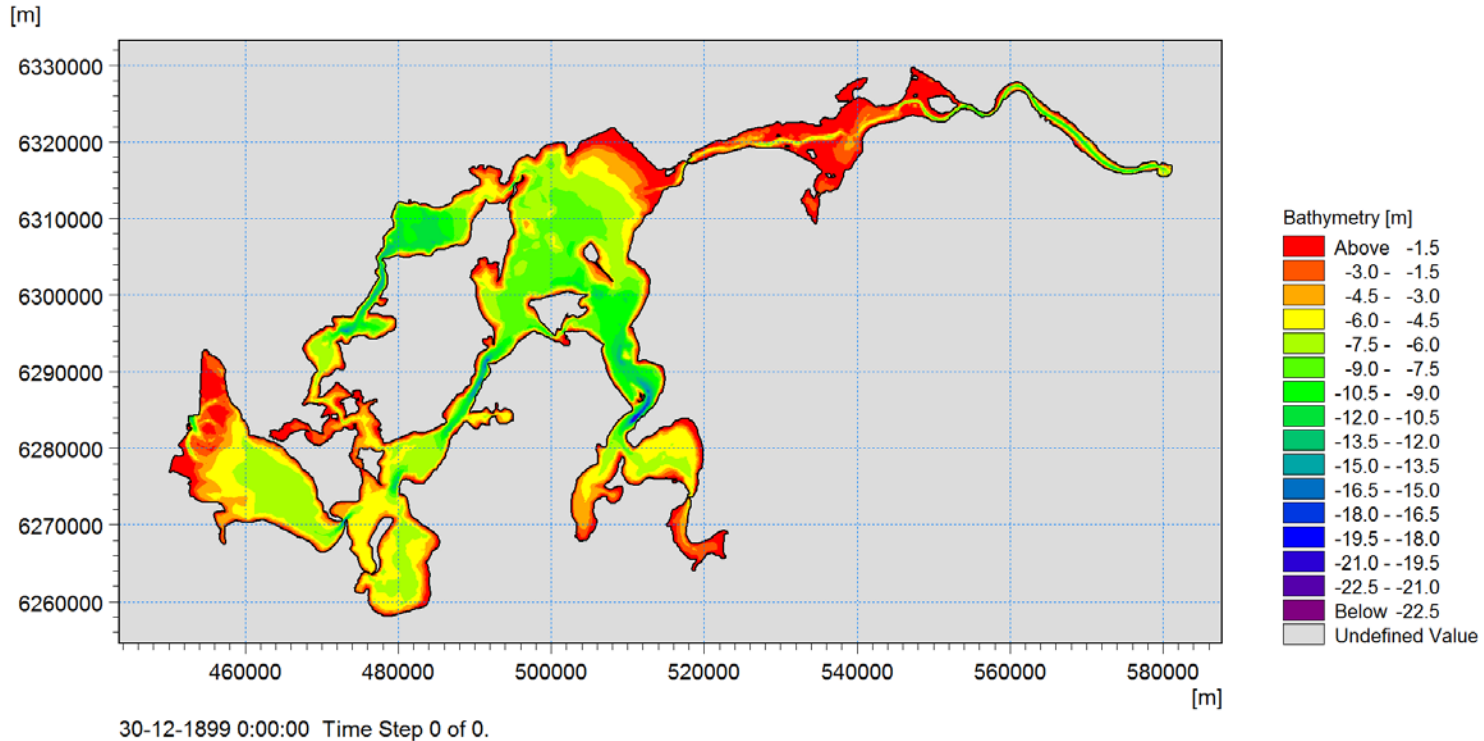
LIMFJORDENS MILJØTILSTAND

Flemming Gertz

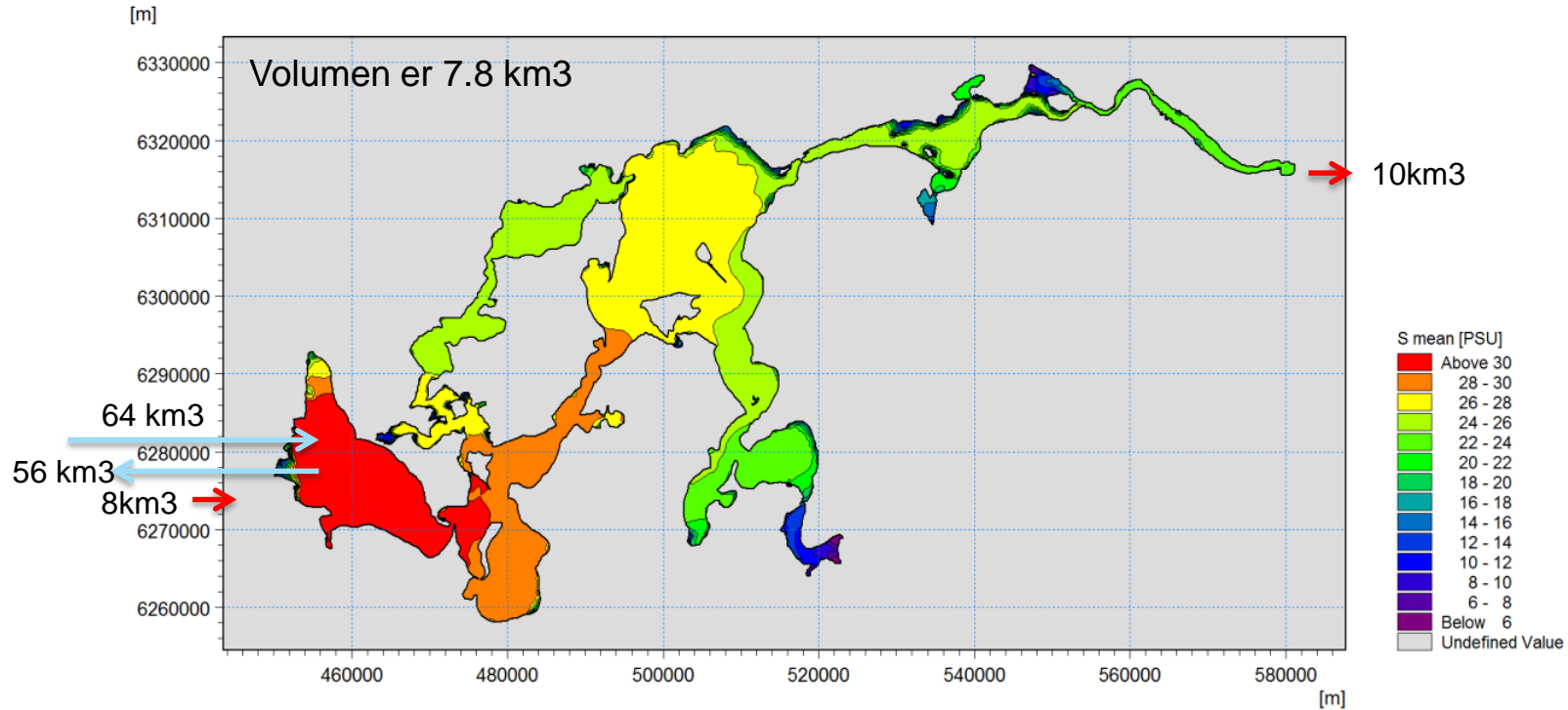
Landbo Limfjord
23. Juni 2017



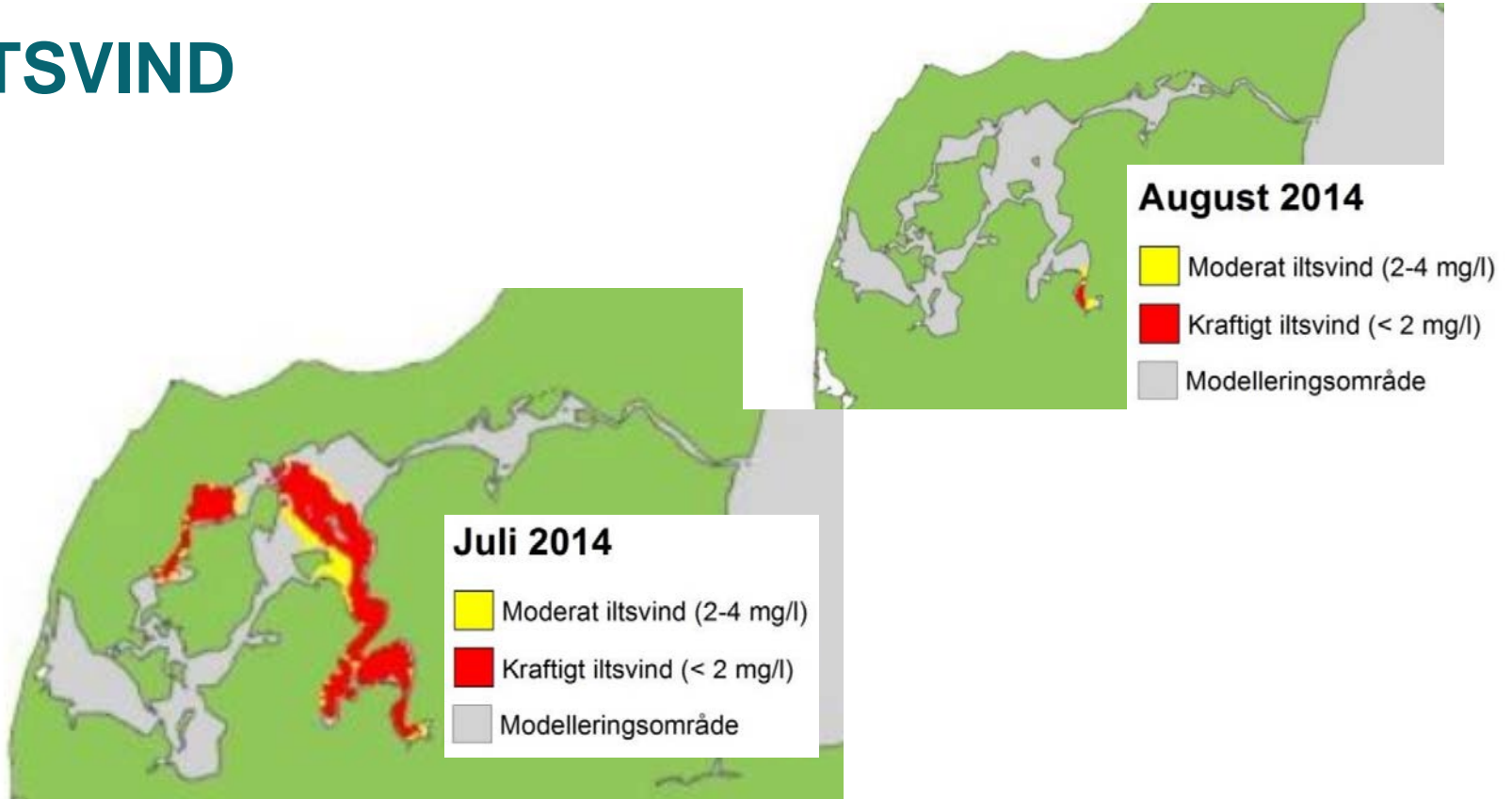
VANDDYBDE



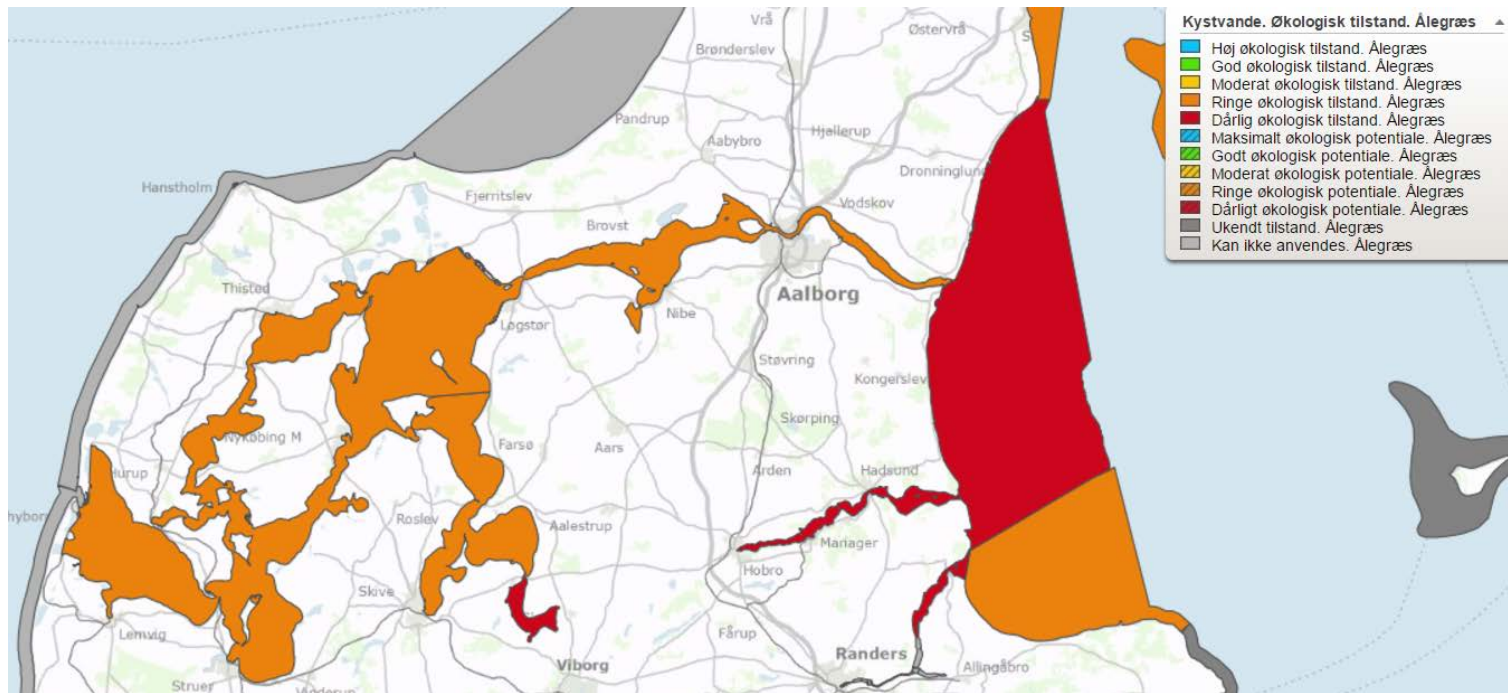
SALTHOLDIGHED



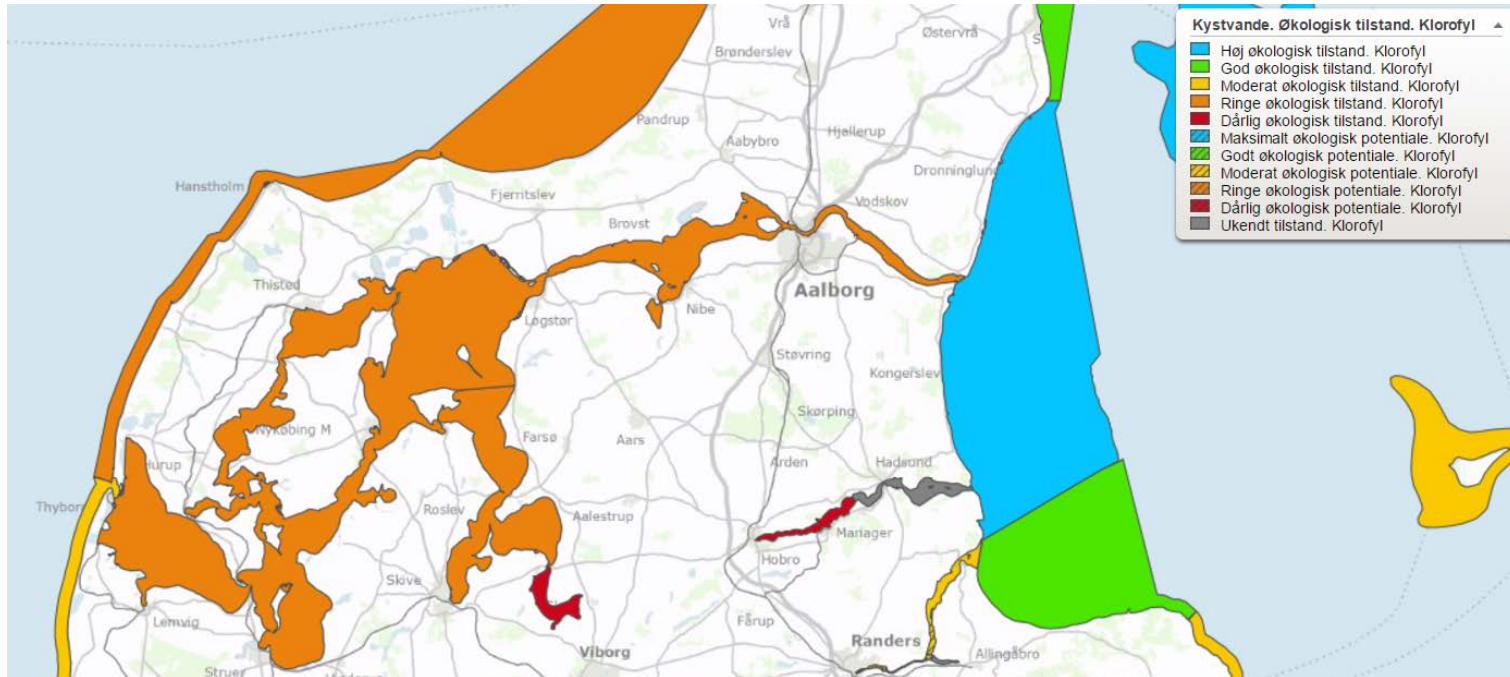
ILTSVIND



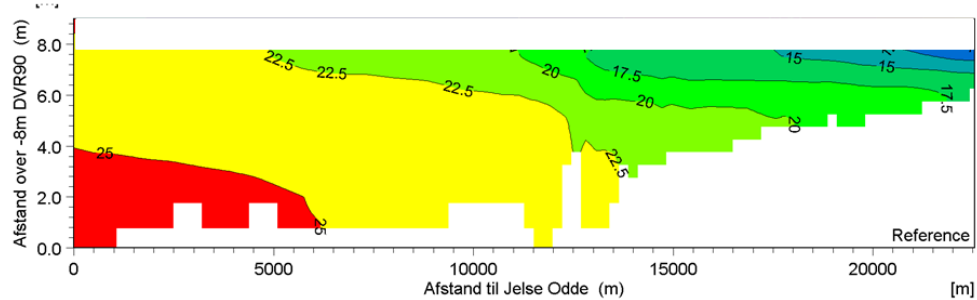
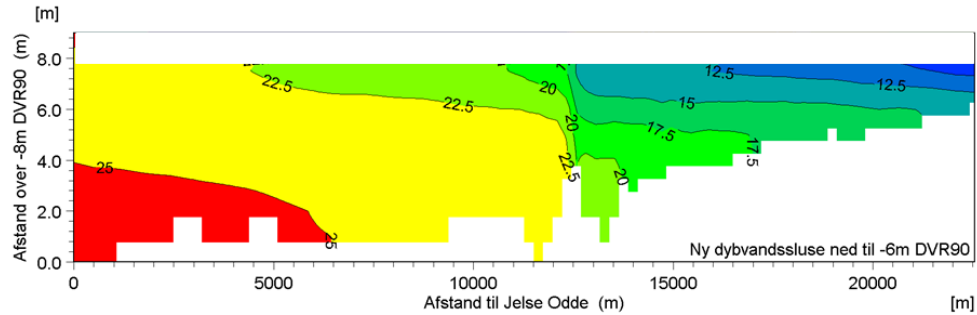
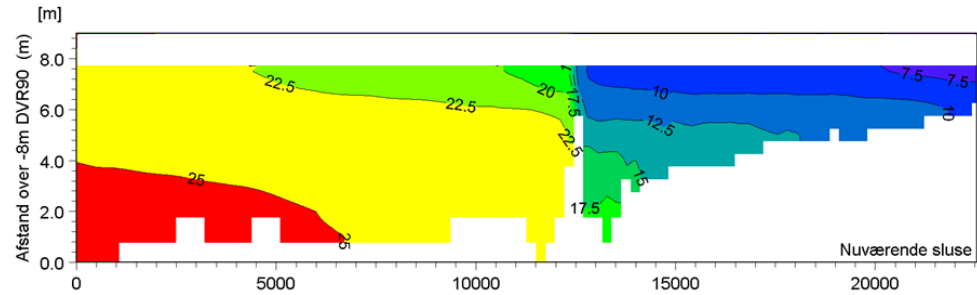
TILSTAND - ÅLEGRÆS



TILSTAND - ALGER (KLOROFYL-A)



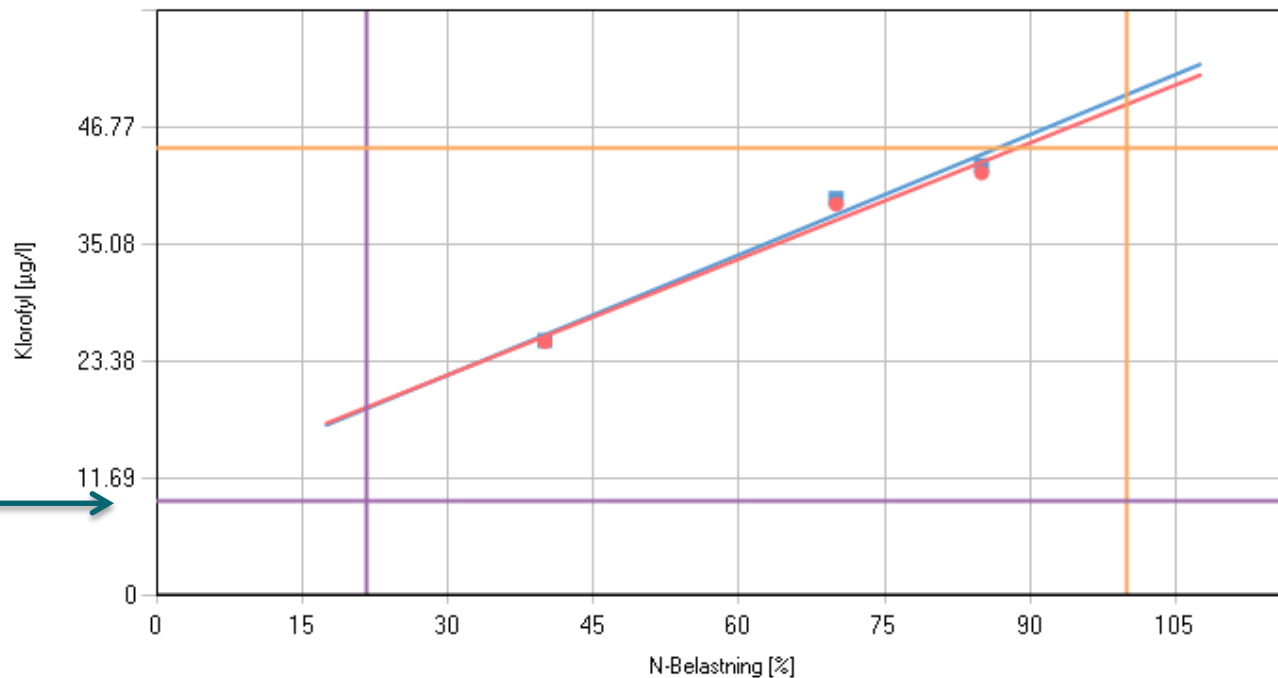
HJARBÆK



HJARBÆK

Område: Hjarbæk Fjord (158), Station: ID158_M38

N-Belastning [%] Klorofyl



Mål: 9 →

HJARBÆK



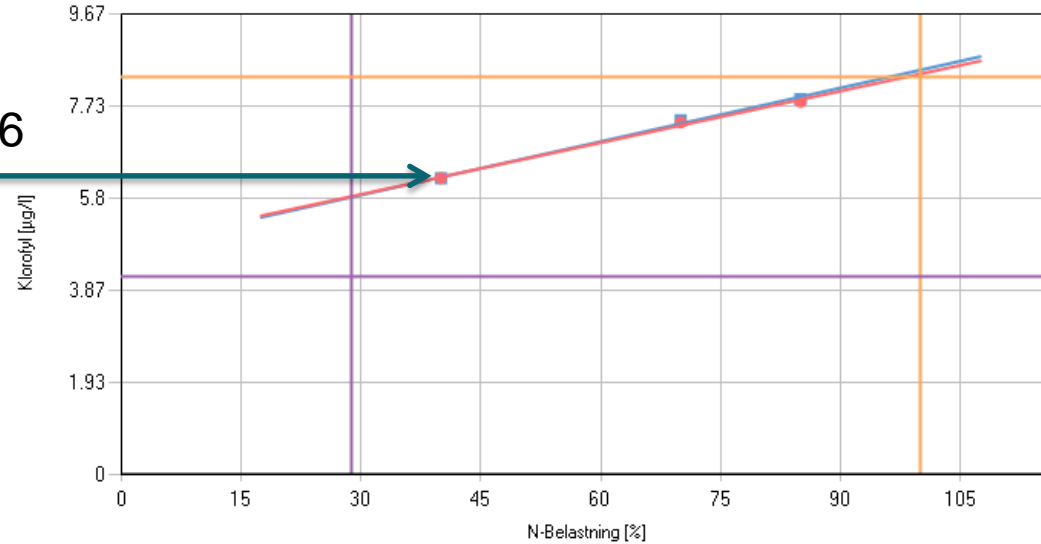
SKIVE FJORD

Område: Lovns, Skive, Riisgårde, Bjørnholms bugt (157), Station: VIB3726-00001

N-Belastning [%] ▼

Klorofyl ▼

Mål: 6

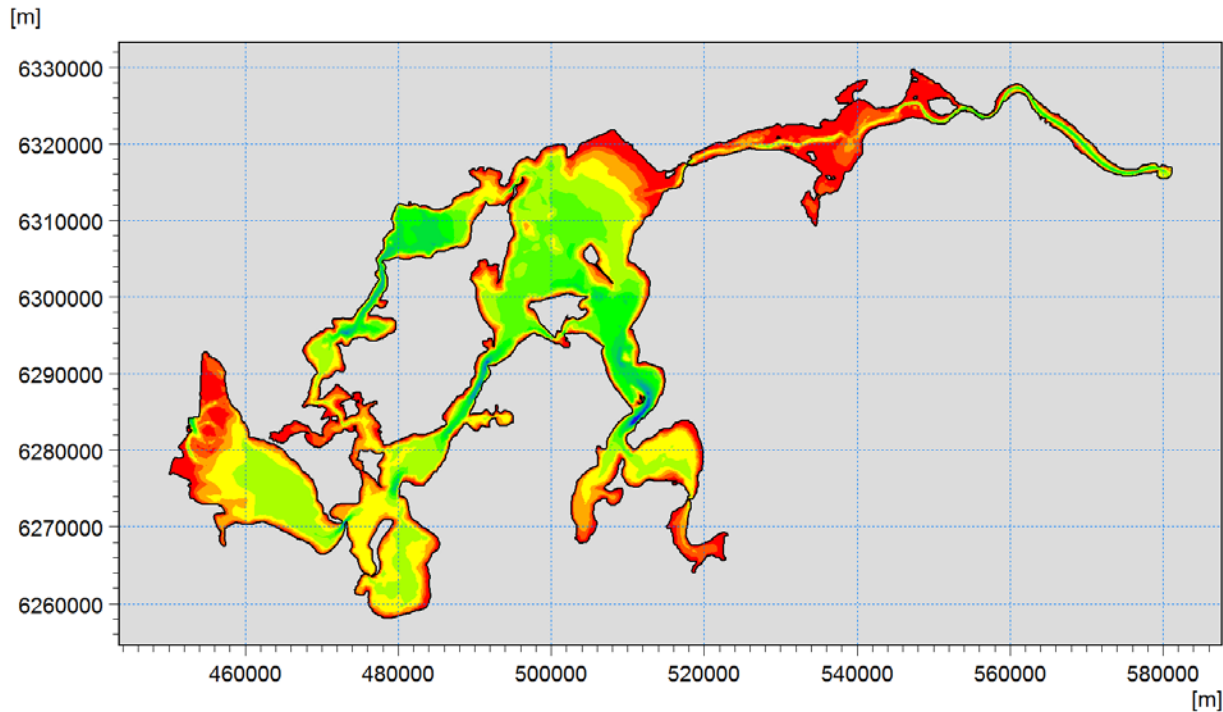


P0 $y = 0,0374 \cdot x + 4,758$

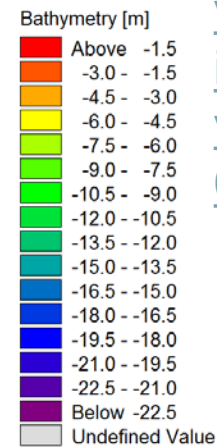
P15 $y = 0,0360 \cdot x + 4,816$

Nutid

Reference



30-12-1899 0:00:00 Time Step 0 of 0.



https://www.tvmidtvest.dk/artikel/sluse-vil-skylle-iltsvindet-vaek?v=0_f50w1bck

GJØL OG NIBE BREDNING



2010

GJØL OG NIBE BREDNING



2014

GJØL OG NIBE BREDNING

